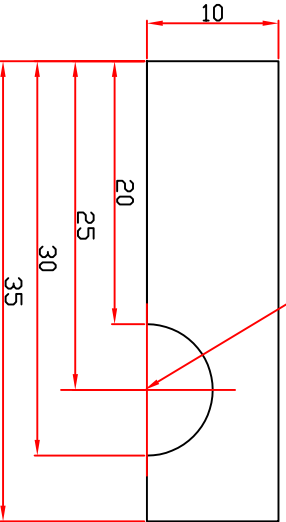
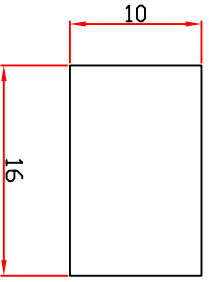
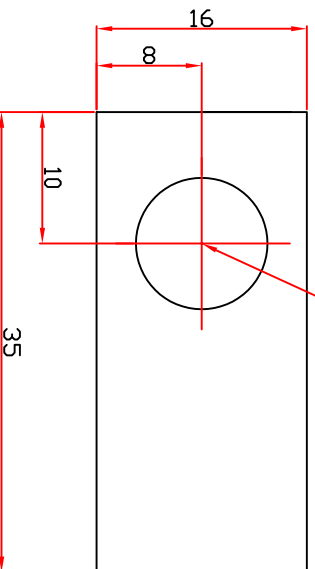


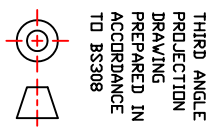
- NOTES:
- 1) Tolerances unless stated:
Linear: $\pm 0.1\text{mm}$,
Angular: $\pm 0.25^\circ$
 - 2) Remove all burrs
 - 3) Do not scale
 - 4) Surface texture $\sqrt{1.6}$
 - 5) Drill through and ream



(See note 5)
R5



(See note 5)
R5



THIRD ANGLE PROJECTION DRAWING PREPARED IN ACCORDANCE TO BS308		GENERAL SURFACE FINISH: μm CLA R _A UNLESS OTHERWISE STATED		DIMENSIONS: mm	
MATERIAL: Aluminium		HEAT & SURFACE TREATMENT		TITLE	
				MICE TARGET - Cooling Pipe Support Clamp	
ALL PROPRIETARY RIGHTS IN THE SUBJECT MATTER HEREOF ARE RESERVED BY SHEFFIELD UNIVERSITY AND NO PERMISSION IS GRANTED TO REPRODUCE THIS PRINT IN WHOLE OR IN PART, OR TO DISCLOSE ANY OF THE INFORMATION UPON IT TO OTHERS.		ISSUE	DATE	INITIAL	ISSUE
		1	12/02/08		
		2			
		3			
		4			
		5			
		6			
		7			
		8			
UNIVERSITY OF SHEFFIELD DEPARTMENT OF PHYSICS & ASTRONOMY SHEFFIELD S3 7RH Tel: 0114-2223543		SCALE: 5 : 1		DATE: 12/02/08	
DRAWN: M. MOHAMMAD		APP.:		DRAWING NUMBER	
RAL REF:		CHK:		TD-SU_32	
				A4	